

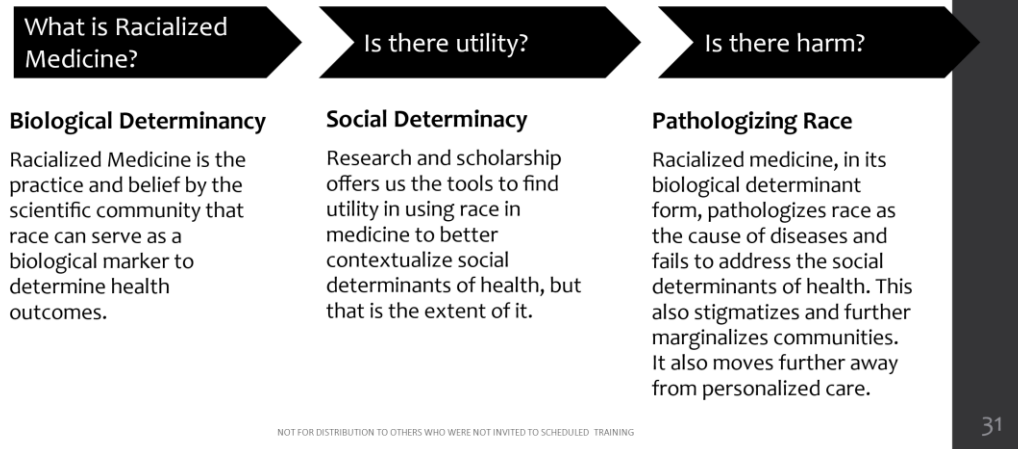
## Foundational EDI Course: History of Race and Racism in Medicine & Science

### Discussion Guide (for use after completing the course)

#### Discussion Guide

1. How does your definition of race influence how you see yourself, the world, and your identity today?
2. Based upon your definition of race, how do you connect with your co-workers, family/friends, and engage the UW as a system?
3. What is the relationship between racializing medicine and pathologizing race? How does racialized medicine impact the culture, medical care, and training approaches of UW Medicine?
4. How does past redlining continue to impact the educational accessibility of BIPOC children today?

#### Questions To Consider



NOT FOR DISTRIBUTION TO OTHERS WHO WERE NOT INVITED TO SCHEDULED TRAINING

Questions about this guide:

[hcesched@uw.edu](mailto:hcesched@uw.edu)

## Office of Healthcare Equity

### Foundational EDI Course: History of Race and Racism in Medicine & Science

#### Discussion Guide (for use after completing the course)

5. In your department, do you notice any ways in which race continues to be given a biological status it does not deserve or pathologized? What does it look like and feel like? Have you discussed this with anyone else?
6. What is the definition of racialized medicine? What do you think about the specific example of BIDIL (The first African American Heart Drug)?
7. How do you think the introduction of BIDIL impacts the Black and Brown community? Please describe what you think the impact looks like.
8. Carl Linnaeus spoke about race hierarchy. What is the relationship between race hierarchy and the healthcare inequities that exist today against BIPOC communities?

Questions about this guide:

[hcesched@uw.edu](mailto:hcesched@uw.edu)